



T680





T680 76-Inch Sleeper

T680

THE CONTINUED BENCHMARK IN PERFORMANCE AND PROFITABILITY

Kenworth's T680 is a true game changer in the business of running trucks at a profit. Aggressive aerodynamic design. A fully integrated, highly efficient PACCAR Powertrain. Uptime engineering that results in an unmatched work ethic. Plus a level of luxury, craftsmanship and intuitive control that makes the T680 The Driver's Truck™ — a factor that helps every Kenworth fleet attract and retain the industry's best operators.



KENWORTH
THE WORLD'S BEST

EXTERIOR REFINEMENTS



The front bumper design and air dam increases air flow under and around the truck while maintaining ground clearance.



Optional LED headlamps with built in heaters increase down-road vision in inclement weather and improve night time viability.



17-Inch long LED side turn indicators improve visibility for nearby drivers.



The chassis fairings design is optimized for fuel economy, but also makes for easier ingress and egress.



Optional 28-Inch long sleeper extenders close the trailer gap, increasing fuel economy. Increase clearance with optional opening extenders.



Optional Kenworth Digital Mirrors and standard A-pillar turning vanes decrease drag and increase fuel economy.

MOST AERODYNAMIC KENWORTH EVER PRODUCED

- Front air dams, A-pillar turning vanes 19 inch side extenders and chassis fairing extenders, rear sleeper fairing design and exhaust cut-out covers are standard.
- Optional front wheel well closeouts
- Optional aerodynamic enhancements:
 - Wheel covers
 - Tandem fairings
 - 28 Inch Wide Sleeper Extenders
 - Optional Digital Mirrors
- Up to 7% Improved Fuel Economy over T680 Classic

FUEL SAVING INTELLIGENCE:

- Predictive Cruise Control
- Predictive Neutral Coast
- Driver Performance Assistant
- Engine Idle Shutdown
- Tire Pressure Monitoring System



KENWORTH IDLE MANAGEMENT SYSTEM:

- No-idle sleeper air conditioning system
- Optional fuel fired heater
- Optional auto start/stop system

DRIVER-OPTIMIZED TECHNOLOGY

All heavy-duty Kenworth 2.1 meter cabs now feature the industry-first 15-inch Digital Display, designed to elevate the driving experience like never before - offering safer, more intuitive control and a full range of productivity features.





Shown with SmartWheel® and Kenworth's exclusive Diamond VIT interior with a black dash, wood grain trim, and Madrona accent color on door pad, seats, and sleeper.

Kenworth's innovative Smartwheel has been updated for digital display feature control – placing all important vehicle performance information readily at hand with tactile, eyes-on-the-road functionality.

To increase visibility in both day and night driving, Kenworth now has the optional digital mirror system.

T680

15-INCH DIGITAL DISPLAY

To drive a truck efficiently, drivers must track fuel, vehicle and safety systems, and performance on the go. But good information isn't the only thing the Kenworth Driver Performance Center offers. The quality, clarity and visual in real-time presentation also means a lot when you're focused on the road. At a glance, it tells you everything you need to know about operating in the sweet spot between performance and efficiency. Truck diagnostics and performance indicators pop up to alert the driver. Trip details and multi-route comparisons allow them to maximize performance every day.





MAXIMIZED VIEW

The 15-inch high-definition digital display contains everything a driver needs to monitor critical vehicle performance - This is an expanded view of the standard gauge layout straight from the factory.

A Favorites View allows you to configure the screen for as much or as little content as desired.



MINIMIZED VIEW

In Minimized View, all gauges are removed except for speedometer and tachometer providing the ultimate "Dark Cockpit" experience and minimum distraction. Warnings and faults present themselves if any issues arise. The hood and horizon headway display can be toggled off for a further darkened view.



ADVANCED DRIVER ASSISTANCE SYSTEMS

Advanced Driver Assistance Systems (ADAS) such as Adaptive Cruise Control (ACC), Collision Mitigation, and Lane Departure are also incorporated. Following distance can be adjusted and alerts are displayed with a combination of sound and clear visuals.



PTO MODE

If the truck is equipped with a Power Take Off (PTO), the Tachometer changes when the PTO is active to display a green PTO icon, RPMs and pre-set conditions if the truck is configured for those.



BODY BUILDER TELL-TALES

Telltale can be customized to match functions and/or added and edited to be displayed on the display. Examples include: Dump Box, Tarp Control, Tail Gate, Power On/Off, Vacuum On, Outtrigger Down, Boom Stored, Conveyor Active, and many others.

T680

DIGITAL MIRROR SYSTEM

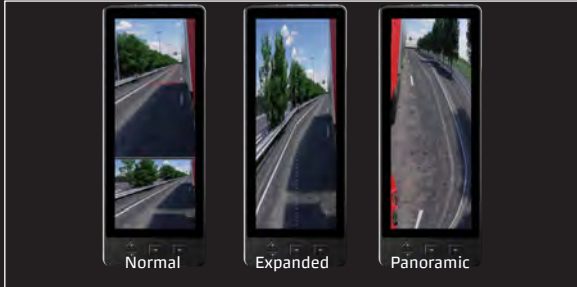


T680 Day Cab



MIRROR FEATURES

- Up to 1.5% fuel economy benefit with smaller mirror design
- Auto camera defrost under 43°F
- Painted or chrome mirror shells



DISPLAY VIEW OPTIONS

- Standard view with rear and convex view
- Panoramic view combines rear + convex at full screen size
- Expanded view combines panoramic + look-down view (passenger side)



MIRROR CAMERAS & SENSORS

- Driver Side - Rear view camera/infrared sensor
- Passenger Side - Separate rear view, lookdown camera and infrared sensor
- Water, ice and dust repelling lenses



DOOR CONTROLS & DISPLAY SELECTOR

- Toggle between physical and camera mirror control
- Same joystick control for view adjustment
- On-monitor menu buttons allow for menu selection and display adjustment



IN-CAB DISPLAYS

- High definition displays, 12.3" Driver Side, 15" Passenger Side
- A-pillar mounting position keeps the driver's eyes closer to the road

T680

DRIVER ASSISTANCE SYSTEMS

STATE OF THE ART TECHNOLOGIES

TORQUE ASSISTED STEERING

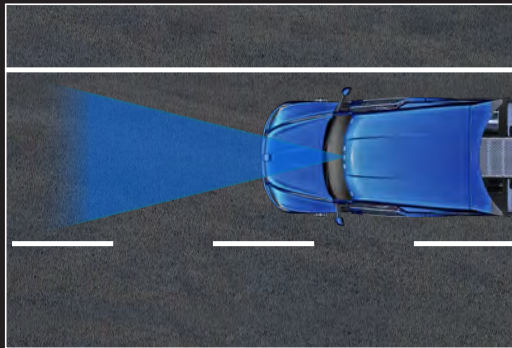
An adaptive steering technology built to improve the driver experience and reduce fatigue. It adjusts torque based on vehicle speed, easing effort at low speeds while firming at higher speeds to provide a consistent feel.



ADAPTIVE CRUISE CONTROL AND COLLISION MITIGATION

Adaptive cruise control (ACC) can make driving trucks safer and less fatiguing. Integrated with your normal cruise control system, ACC “reads” traffic conditions via front-facing radar sensor and modulates the throttle and the brakes to keep your truck at a pre-set distance from the vehicle in front of it. Then, when the road is clear, the system will re-accelerate the vehicle back to the set speed.

Far beyond a mere warning system, Kenworth collision mitigation detects when the truck may be about to collide with another vehicle or object, alerts the driver and takes pre-emptive braking action — when necessary — to avoid or considerably reduce the severity of a crash.



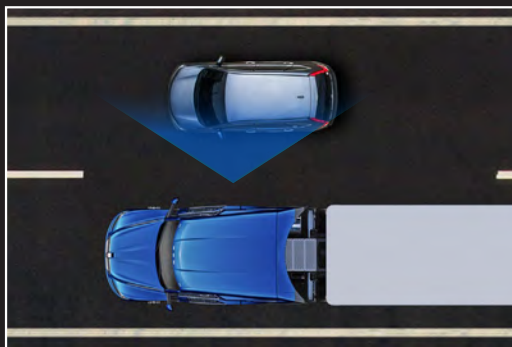
LANE KEEP ASSIST

Kenworth’s lane departure warning system helps combat lane drift due to fatigue and distractions. The system continually monitors the truck’s location related to lane markings and automatically emits a distinctive audible warning whenever an unintended lane change (unsignaled) is detected — alerting the driver to make a correction.



DRIVER PERFORMANCE ASSISTANT

Standard on every Kenworth with a PACCAR MX-13 engine, the Driver Performance Assistant module monitors and scores driving technique. The system monitors the driver during their route and then will give feedback at either pre or post trip on how to best optimize the truck’s performance — by coasting longer, utilizing the engine brake, anticipating the road ahead and braking with less force.



SIDE OBJECT DETECTION

The side object detection system continuously monitors a truck’s blind spots and provides the driver with audible and visual alerts when an object or vehicle has entered these zones — invaluable when making a lane change or negotiating tight delivery sites.



FOR MORE INFORMATION ON KENWORTH'S ENTIRE SUITE OF DRIVER ASSISTANCE TECHNOLOGIES, SCAN THE QR CODE

T680

COMFORT AND STYLE

AS BEAUTIFUL AS THIS TRUCK IS, IT'S EVEN MORE SATISFYING TO DRIVE.

One look and you know: A Kenworth T680 is The Driver's Truck™. Its bold, sweeping lines wrap a world-class cabin. Where ground breaking technology and true ergonomic comfort elevate the driving experience while reducing fatigue. Where space, elegant design, fine craftsmanship and an abundance of luxury details define the environment. And where drivers can feel completely at home wherever the road might take them.

REFRIGERATOR PAD



For team driver's who want more refrigerator space, the optional refrigerator pad will give you a secure location behind the passenger seat.

CARGO SHELF



For those who need more storage space and don't require an upper bunk, the optional back wall cargo shelf will give you the room you need.

BUNK LADDER



Optional upper bunk ladder folds away when not in use. This provides an alternative way for drivers to access the upper bunk.

INTERIOR COLORS AND OPTIONS

The T680 is available in two interior trim levels, the Vantage and the Diamond VIT. Offered in Slate Gray or Tan.

VANTAGE INTERIOR



SLATE GRAY INTERIOR



DIAMOND VIT INTERIOR



TAN INTERIOR



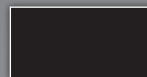
VANTAGE INTERIOR ACCENTS



FLOOR COVERINGS



Standard Black Rubber Mat



Optional Black Carpet

DIAMOND VIT INTERIOR ACCENTS



Zebra Ash Burl



A premium audio package with 320-watt amp, 10-inch subwoofer and 8 speakers.

Sleeper Controls

Pull out refrigerator



Large capacity, drawer-style refrigerator/freezer mounted at mid-level for wide open access without bending over.

T680 76-Inch High-Roof Diamond VIT

Storage

The 1800-watt inverter includes up to four standard 120 volt outlets.

Convenient LED lighting provides ample interior light throughout the sleeper.

Premium Kenworth Seating Options

Swivel TV mount ideal for flat screen TVs up to 28"

The Driver's Studio includes the 180-degree swivel passenger seat and swivel table option set, which maximizes the driver's living space by combining the cab and sleeper into a large studio, allowing the driver to relax in comfort in the passenger seat rather than being confined only in the back of the sleeper.

Sleepers available in 76" High-Roof, 76" Mid-Roof, and 52" Flat Top.

76 Inch High-Roof Sleeper Diamond VIT

T680

PACCAR POWERTRAIN



PACCAR MX-13

Horsepower	Peak Torque lb-ft
405	1,650/1,750 @ 900*
430	1,550 @ 900
455	1,650 @ 900
455	1,550/1,750 @ 900*
455	1,650/1,850 @ 900*
485	1,650 @ 1,000
510	1,850 @ 1,000

Powering the Kenworth T680 are the high quality and reliability of the PACCAR MX engines. The 12.9-liter PACCAR MX-13 engine is designed to meet the demands of linehaul heavy-duty truck applications — delivering the increased horsepower and torque needed to move large payloads with ease, even on steep grades.

EXCELLENT FUEL ECONOMY

Fuel savings is one reason the PACCAR MX-13 continues to gain popularity in the heavy-duty market.

LOW COST OF SERVICE

With up to a 75,000-mile oil change interval, MX engines will save your business money due to the low cost of routine maintenance over the life of the engine.

WEIGHT SAVINGS

Less engine weight means hauling more payload with every trip. The PACCAR MX-13 engine provides truck owners up to a 450 LB. weight savings over 15 L. engines.



PACCAR MX-11

Horsepower	Peak Torque lb-ft
355	1,250 @ 900
375	1,350 @ 900
400	1,450 @ 900
415	1,550 @ 900
430	1,450/1,650 @ 900*
430	1,650 @ 900
445	1,700 @ 900

The 10.8-liter, PACCAR MX-11 engine is perfect for weight sensitive pickup and delivery, less-than truckload and regional applications.

EXCELLENT FUEL ECONOMY

With ratings of up to 445 HP and 1,700 LB.-FT. of torque, downsizing for fuel economy no longer means compromising performance.

LOW COST OF SERVICE

With a 75,000-mile oil change interval, MX engines will save your business money due to the low cost of routine maintenance over the life of the engine.

WEIGHT SAVINGS

Weighing 300 LBS. less than a 13 L. engine, the MX-11 can haul more payload.

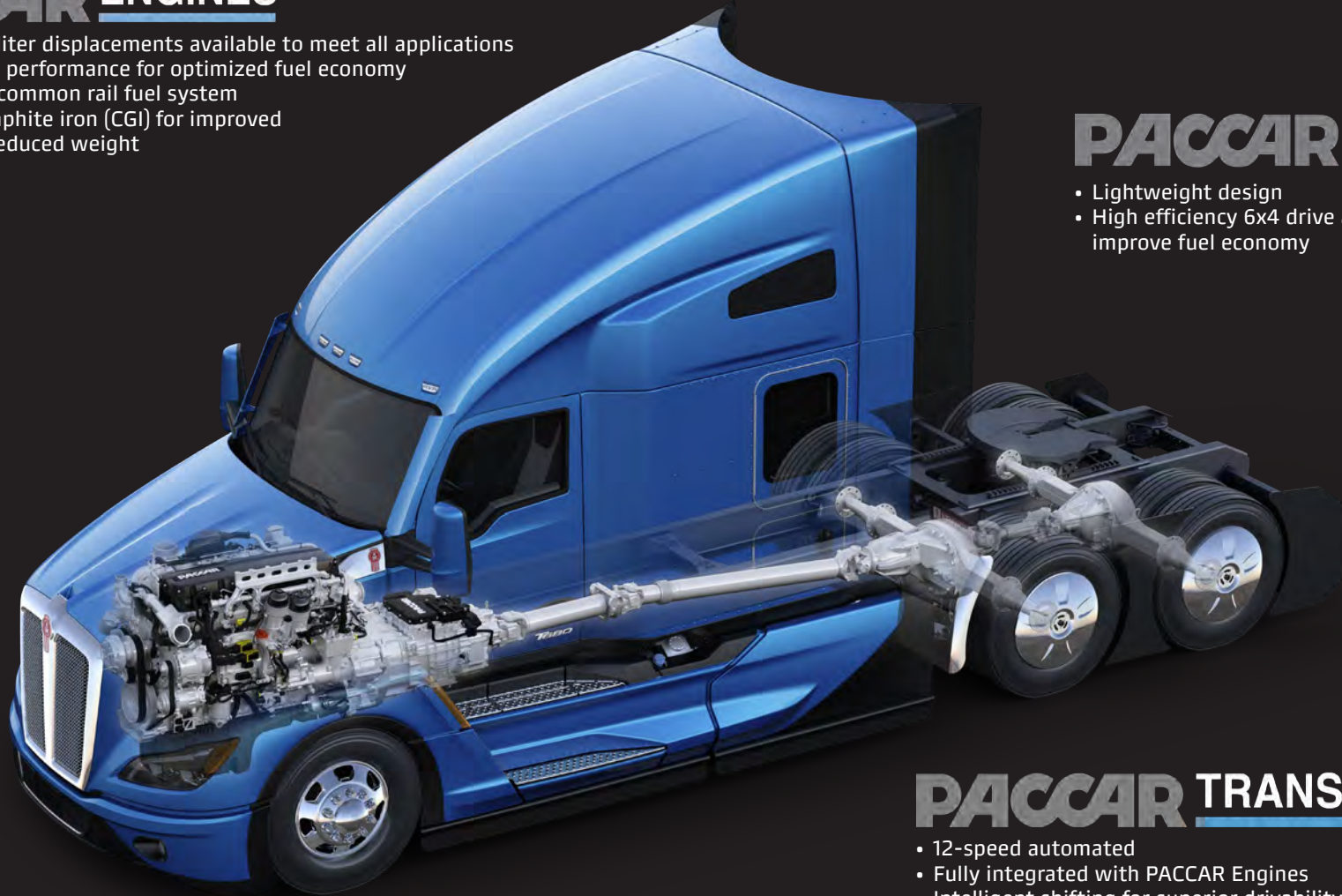
*Multi Torque Rating



KENWORTH
THE WORLD'S BEST

PACCAR ENGINES

- 13-liter and 11-liter displacements available to meet all applications
- High efficiency performance for optimized fuel economy
- High pressure common rail fuel system
- Compacted graphite iron (CGI) for improved strength and reduced weight



PACCAR AXLES

- Lightweight design
- High efficiency 6x4 drive axles to improve fuel economy

PACCAR TRANSMISSION

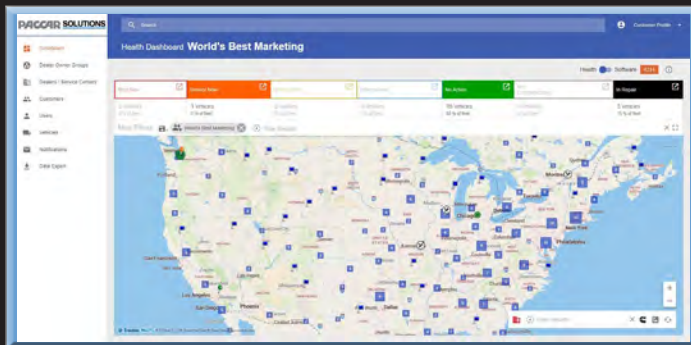
- 12-speed automated
- Fully integrated with PACCAR Engines
- Intelligent shifting for superior drivability
- Lightweight design
- Optional PACCAR TX-18 18-speed automated for heavy haul



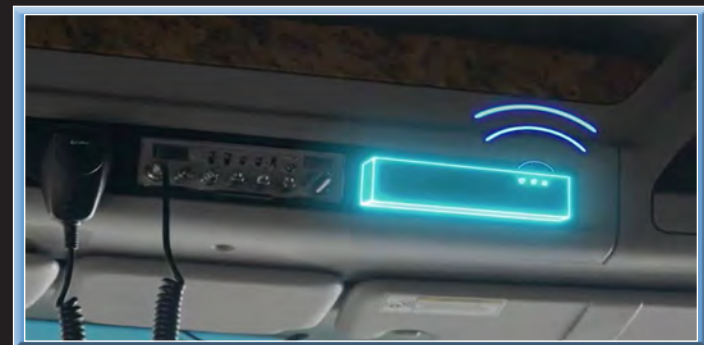
TruckTech+

REMOTE DIAGNOSTICS

Track live truck performance and health, no matter where you are! TruckTech+ Remote Diagnostics actively monitors 800+ engine and aftertreatment fault codes via factory installed telematics hardware.



- Vehicle performance
- Software status for OTAs
- Kenworth Dealers on map



- TruckTech+ Antenna
- Trimble Information Gateway (2022+)
- PeopleNetMobile Gateway (2017+)



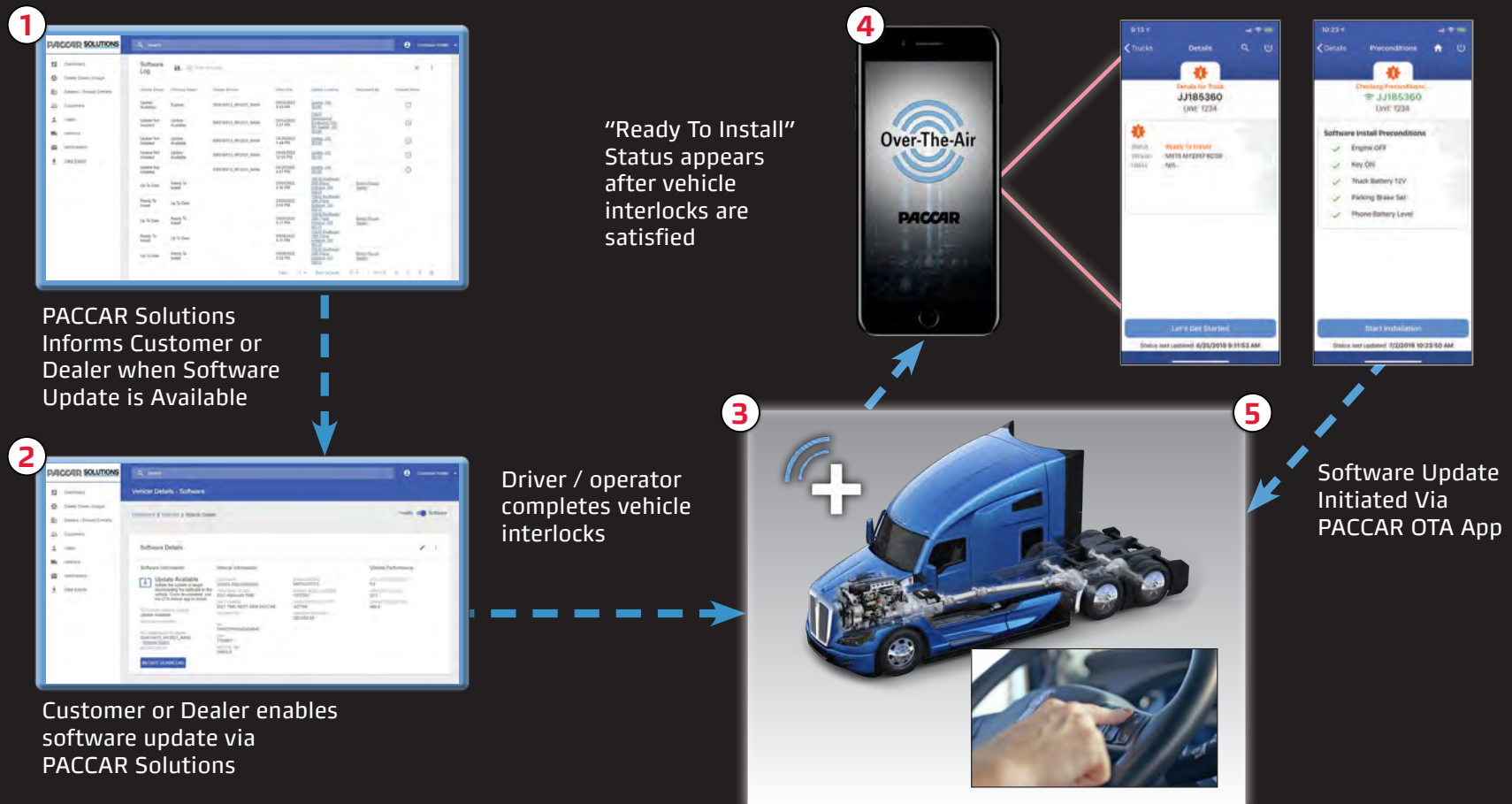
- Fault code status
- Troubleshooting information
- Fault log



- Fleet management capabilities via PACCAR Solutions & factory installed equipment
- No need for aftermarket devices!

THE NEXT STEP IN MAXIMIZING UPTIME.

TruckTech+ Over-The-Air is a software update system that helps you keep your trucks running with the latest engine software version – safely and securely over-the-air. This will help you optimize truck performance and maximize uptime across your fleet.





TruckTech+

SERVICE MANAGEMENT



TRUCKTECH+ SERVICE MANAGEMENT

Minimize unnecessary phone calls and emails with TruckTech+ Service Management, a real time web-based portal utilized for tracking your truck repair status.

Available throughout the Kenworth PremierCare service network, TruckTech+ Service Management allows you to manage scheduled and unscheduled service events through a web portal that increases repair status communication, eliminates error prone data, and centralizes all asset information (build, service history, warranty and product updates).



PREMIERCARE SETS THE STANDARD FOR CUSTOMER SERVICE

When you selected your Kenworth, you chose The World's Best[®] heavy duty truck. You deserve the same level of passion, excellence and attention to detail from those who care for it. Kenworth PremierCare is committed to increasing productivity of every truck in your fleet by offering extended hours of operation, expedited diagnostics, mobile roadside assistance and expert factory-trained technicians.

PremierCare Gold Certified Dealers are certified by Kenworth and offer a complete range of PremierCare services that are all focused on maximizing uptime.



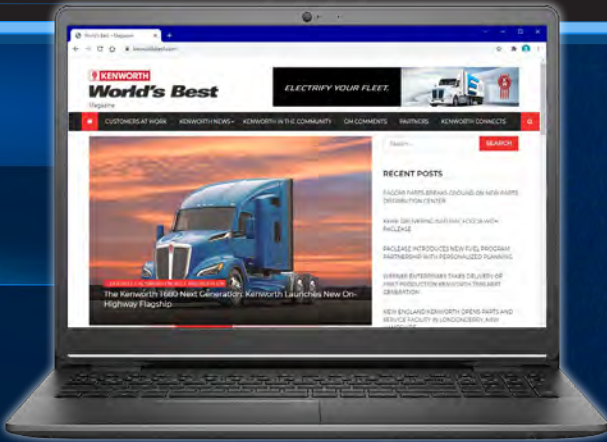


Follow Kenworth online to stay up to date on the latest from The World's Best.

KENWORTH.com



World's Best Magazine



Kenworth Essentials App



KWworldsbest.com



A PACCAR COMPANY

KENWORTH TRUCK COMPANY
P.O. Box 1000
Kirkland, Washington 98083-1000
(425) 828-5000

CANADIAN KENWORTH COMPANY
6711 Mississauga Road N.
Mississauga, Ontario L5N 4J8
(905) 858-7000



Note: Equipment and specifications in this brochure are subject to change without notice. Images of equipment/components shown in this brochure are not to scale. Consult with your Kenworth dealer at time of ordering for standard and optional equipment and are subject to supply/availability.